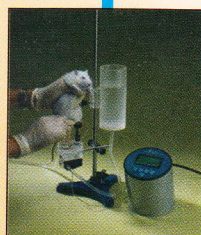


As Per PCI Regulations  
Third Year B. Pharm.

Semester-V

# EXPERIMENTAL PHARMACOLOGY-II

(Bridges the Gap Between Animal Models and Computer Simulation Models)



GHANSHYAM PANIGRAHI  
ARJUN PATRA

 **NIRALI**  
PRAKASHAN  
ADVANCEMENT OF KNOWLEDGE

## About The Authors



**GHANSHYAM PANIGRAHI** is working as Associate Professor and Head, Department of Pharmacology, Royal College of Pharmacy and Health Sciences, Berhampur, Odisha. He has deep insight into experimental pharmacology and preclinical testing of drugs. He has experience of 12 years in teaching experimental pharmacology to undergraduate and postgraduate students. His fields of research interest are screening of natural products for diabetes mellitus and associated disorders. His research work has been published in more than 30 research articles. He has guided numbers of M. Pharm. and Ph.D. scholars to carry out their research work. Dr. Panigrahi is a life member of Indian Pharmacological Society (IPS) and The Association of Pharmaceutical Teachers of India (APTI).



**ARJUN PATRA** obtained postgraduate and doctorate degree from Birla Institute of Technology, Mesra, Ranchi. Recently he has completed Postdoctoral Research in USA under Raman Fellowship funded by University Grants Commission. He has around 15 years of teaching experience in various pharmacy colleges at Berhampur, Moradabad and Jaipur, and currently working as Assistant Professor at Guru Ghasidas Vishwavidyalaya (A Central University), Bilaspur, Chhattisgarh. Dr. Patra has supervised M. Pharm. and Ph.D. students. He has published and presented research papers in national/ international journals/conferences. Dr. Patra specializes in Pharmacognosy and has studied a wide range of plants for their phytochemical and pharmacological potential. Dr. Patra's major fields of research interest are natural product exploration, nano-delivery of natural products for treatment of cancers and screening of medicinal plants for different pharmacological activities.

### BOOKS AVAILABLE AT

**PRAGATI BOOK CENTER - Email: [pbcpune@pragationline.com](mailto:pbcpune@pragationline.com)**

- 157 Budhwar Peth, Opp. Ratan Talkies, Next To Balaji Mandir, Pune 411002 • Mobile : 9657703148
- 676/B Budhwar Peth, Opp. Jogeshwari Mandir, Pune 411002  
Tel : (020) 2448 7459 • Mobile : 9657703147 / 9657703149
- 152 Budhwar Peth, Near Jogeshwari Mandir, Pune 411002  
Mobile : 8087881795
- 28/A Budhwar Peth, Amber Chambers, Appa Balwant Chowk, Pune 411002 • Tel : (020) 6628 1669 • Mobile : 9657703142

**PRAGATI BOOK CORNER - Email: [niralimumbai@pragationline.com](mailto:niralimumbai@pragationline.com)**

- Indira Niwas, 111 - A, Bhavani Shankar Road, Dadar (W), Mumbai 400028.  
Tel: (022) 2422 3526/6662 5254

[niralipune@pragationline.com](mailto:niralipune@pragationline.com) | [www.pragationline.com](http://www.pragationline.com)

Also find us on  [www.facebook.com/niralibooks](http://www.facebook.com/niralibooks)

 [@nirali.prakashan](https://www.instagram.com/nirali.prakashan)



## Contents

1. Introduction to in-vitro pharmacology and physiological salt solutions.
2. Effect of drugs on isolated frog heart.
3. Effect of drugs on blood pressure and heart rate of dog.
4. Study of diuretic activity of drugs using rats/mice.
5. DRC of acetylcholine using frog rectus abdominis muscle.
6. Effect of physostigmine and atropine on DRC of acetylcholine using frog rectus abdominis muscle and rat ileum respectively.
7. Bioassay of histamine using guinea pig ileum by matching method.
8. Bioassay of oxytocin using rat uterine horn by interpolation method.
9. Bioassay of serotonin using rat fundus strip by three point bioassay.
10. Bioassay of acetylcholine using rat ileum/colon by four point bioassay.
11. Determination of  $PA_2$  value of prazosin using rat anococcygeus muscle (by Schild's plot method).
12. Determination of  $PD_2$  value using guinea pig ileum.
13. Effect of spasmogens and spasmolytics using rabbit jejunum.
14. Anti-inflammatory activity of drugs using carrageenan induced paw-edema model.
15. Analgesic activity of drug using central and peripheral methods.



work. D  
Pharma



Dr. Patra  
and pha  
explorat  
plants fo

### PRAGAT

- 157  
Pune
- 676/  
Tel :
- 152 t  
Mob
- 28/A  
Pune

### PRAGAT

- Indira  
Tel: (C

niralipun

Also find